

INTERCHANGEABLE HEAD DIGITAL "CLICK" TORQUE WRENCHES (WIFI LAN)

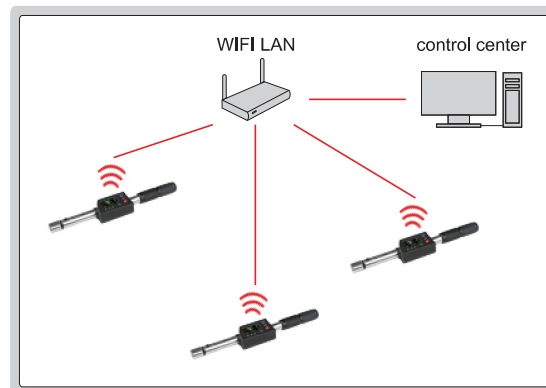
INSPECTION
CERTIFICATE

DATA
OUTPUT



Torque wrench:

- Clockwise and counter-clockwise operation
- Unit: N.m, cN.m, lb.in, lb.ft, kg.cm, kg.m, oz.in
- Peak and first peak working modes
- Maintain the click audible alarm feature of mechanical wrench
- Mechanical structure adjusts torque value, digital sensor displays real torque value, wrench can be used without torque tester
- Set the angle range to strictly monitor angle of the screw from fitting surface to tightening
- Interval display of curved interface and main interface after unloading, upper and lower tolerance limits can be set to determine pass or fail by LED lights
- Provide torque graph for analyzing and adjusting the tightening strategy
- Scanning module and scanning windows to match corresponding screws
- Open communication protocols for users to develop and interface with factory MES, PLC and other systems
- Automatic zeroing during continuous operation
- Memory of 1000 results and 100 historical review curves
- Auto power off time can be set
- 2 high capacity rechargeable lithium batteries for alternate use



application

Settings

Torque unit: **Nm** Torque range: 21.6-23.4

Set torque: **22.5**

±Err%: **4**

Set angle (°): **10** Angle range (°): 1-19

±Error (°): **9**

Data upload methods: ☒ Sequential upload ☐ Qualified upload

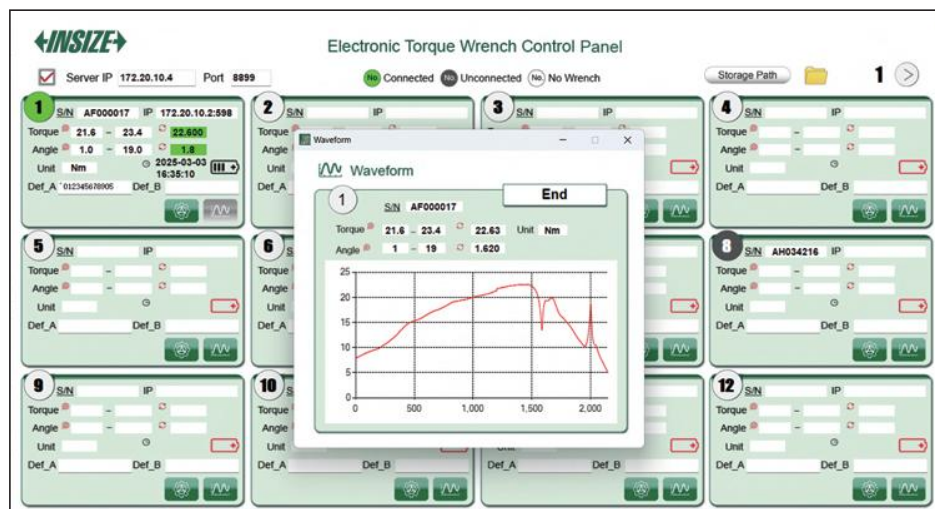
Set direction: ☒ CW/CW ☐ CW ☐ CCW

Judge mode: ☐ Peak ☒ F Peak

Standby time: **60**

Read **Update**

parameter setting software (included)



work display software (included)

Software:

- WIFI LAN real-time communication can receive and monitor 24 wrenches at the same time, data can be automatically sent to the centralized control center software
- Parameters can be set and matched directly to the wrench via USB connection to the software
- Can select whether the wrench only sends qualified data after operation (in accordance with the tolerance)
- The data is stored in the wrench when the wrench is disconnected, and the data is automatically uploaded to the computer after wireless connection, or can be uploaded manually through USB connection
- The data in the software is stored in a file with Txt and can be copied and exported to Excel

SPECIFICATION

Code	Range	Accuracy		Resolution	Socket size (A×B)	Square driver (D)	Standard effective length (L)	Length	Weight
		Torque	Angle						
IST-35W10	2~10N.m	±3%	±1% of indicated value + ±1° (speed 10°~180°/s) + ±1° (damping error)	0.001N.m	12×9mm	1/4"	210mm	234mm	520g
IST-35W20	4~20N.m			0.01N.m	12×9mm	1/4"	225mm	249mm	550g
IST-35W30	6~30N.m			0.01N.m	12×9mm	1/4"	225mm	249mm	550g
IST-35W60	10~60N.m			0.01N.m	12×9mm	3/8"	280mm	318mm	880g
IST-35W100	20~100N.m			0.01N.m	12×9mm	3/8"	324mm	363mm	1000g
IST-35W200	40~200N.m			0.1N.m	18×14mm	1/2"	453mm	485mm	1340g
IST-35W300	60~300N.m			0.1N.m	18×14mm	1/2"	588mm	620mm	1700g
IST-35W400	80~400N.m			0.1N.m	18×14mm	1/2"	668mm	700mm	1850g



OPEN END HEAD (optional)

Code	Open size	Applicable wrenches	Code	Open size	Applicable wrenches
IST-11WM-K6	6mm	IST-35W10 IST-35W20 IST-35W30 IST-35W60 IST-35W100	IST-11WM-K13A	13mm	IST-35W200 IST-35W300 IST-35W400
IST-11WM-K7	7mm		IST-11WM-K14A	14mm	
IST-11WM-K8	8mm		IST-11WM-K15A	15mm	
IST-11WM-K9	9mm		IST-11WM-K16A	16mm	
IST-11WM-K10	10mm		IST-11WM-K17A	17mm	
IST-11WM-K11	11mm		IST-11WM-K18A	18mm	
IST-11WM-K12	12mm		IST-11WM-K19A	19mm	
IST-11WM-K13	13mm		IST-11WM-K20A	20mm	
IST-11WM-K14	14mm		IST-11WM-K21A	21mm	
IST-11WM-K15	15mm		IST-11WM-K22A	22mm	
IST-11WM-K16	16mm		IST-11WM-K23A	23mm	
IST-11WM-K17	17mm		IST-11WM-K24A	24mm	
IST-11WM-K18*	18mm		IST-11WM-K27A*	27mm	
IST-11WM-K19*	19mm		IST-11WM-K30A*	30mm	
IST-11WM-K20*	20mm		IST-11WM-K32A*	32mm	

* Torque value needs to be corrected for these heads

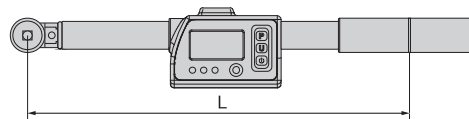
BOX END HEAD (optional)

Code	Open size	Applicable wrenches
IST-11WM-M8	8mm	IST-35W10 IST-35W20 IST-35W30 IST-35W60 IST-35W100
IST-11WM-M10	10mm	
IST-11WM-M13	13mm	
IST-11WM-M14	14mm	
IST-11WM-M15	15mm	
IST-11WM-M17	17mm	
IST-11WM-M19	19mm	IST-35W200 IST-35W300 IST-35W400
IST-11WM-M13A	13mm	
IST-11WM-M14A	14mm	
IST-11WM-M15A	15mm	
IST-11WM-M17A	17mm	
IST-11WM-M19A	19mm	
IST-11WM-M22A	22mm	
IST-11WM-M24A	24mm	
IST-11WM-M27A*	27mm	
IST-11WM-M30A*	30mm	
IST-11WM-M32A*	32mm	

STANDARD DELIVERY

Digital torque wrench	1 pc
Ratchet head	1 pc
Torque adjustment tool	1 pc
Type-C transmission cable	1 pc
Centralized control center software	1 set
Rechargeable lithium battery	2 pc
Lithium battery charger	1 pc

torque correction



torque value needs to be corrected if L is different when head is changed, correction factor is the ratio of standard effective length to actual effective length

OPTIONAL ACCESSORY

Non-standard wrench heads	customized according to customer requirements
Web framework extension software system	